

TEF Ex



Who we are and what we do

- TEPEX - the regional leader in manufacturing of the explosion-protected electrical equipment
- Our vision: continue the tradition of more than 60 years of experience in the field

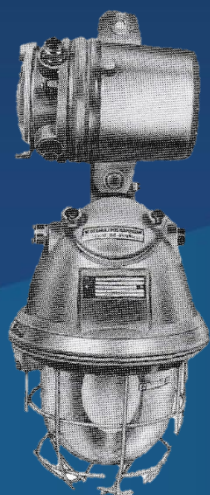
1948.

TEP

2002.



TEPEX



Who we are and what we do

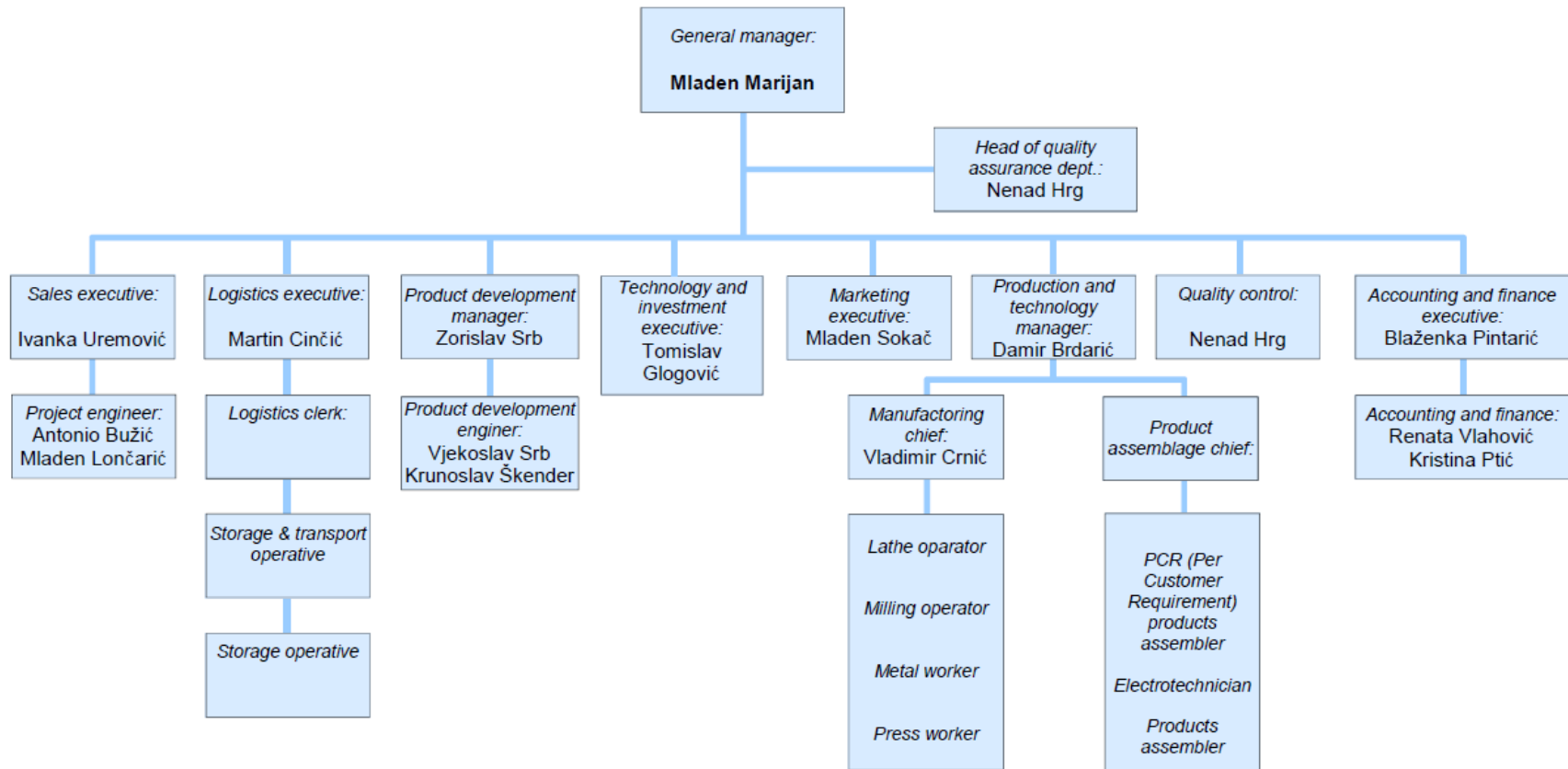
In accordance with national regulative, all of our products and systems for quality assurance are certified by an authorized certification institution according to the **ATEX Directive 2014/34/EU** by an authorized certification notify body.

- *CESI, NB₀₇₂₂ - Italy*
- *SGS - Quality Assurance System ISO 9001*
- *SGS - Environmental Management System ISO 14001*
- *EAC certifikat / Eurasian Customs Union*
(Russia, Belarus, Kazakhstan, Armenia, Kyrgyzstan)

Basic information about company

- Total number of employees (September 2019) - 60
- General manager – 1 dipl.ing.
- Sales & marketing department – 4 dipl.ing.
- R&D – 4 dipl.ing.
- Technology and investment – 1 dipl.ing.
- Production and technology – 2 dipl.ing.
- Quality control – 1 dipl.ing.
- Accounting and finance – 2 mag.oec.

Basic information about company



TEPEX d.o.o. 10090 Zagreb, Medarska 69	ORGANIZATION CHART		Author / Date / Signature :	Approved by / Date / Signature :
	Doc.No.: TEPEX.IS.02.01	Ver: 29	Nenad Hrg / 1.1.2019. /	Mladen Marijan / 1.1.2019. /

Basic information about company

- Total - 3500 m²
- Offices area - 300 m²
- Production area - 1500 m²
- Mounting area – 1000 m²
- Warehouse area – 700 m²

Most relevant machines, software

- CNC Lathes, CNC Millings, Laser machine (for sheet metal), Laser engraving machine.....
- MS Office, AutoCAD, Solid WORKS

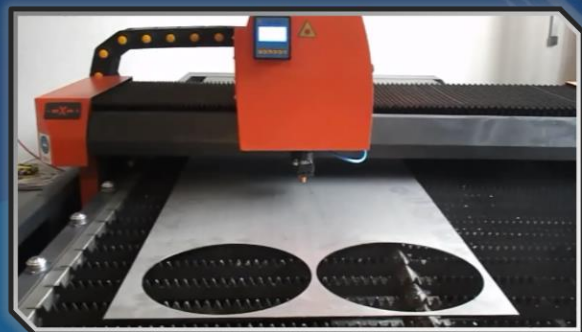
Production of Ex electrical equipment



CNC MACHINES



CNC DRILLING

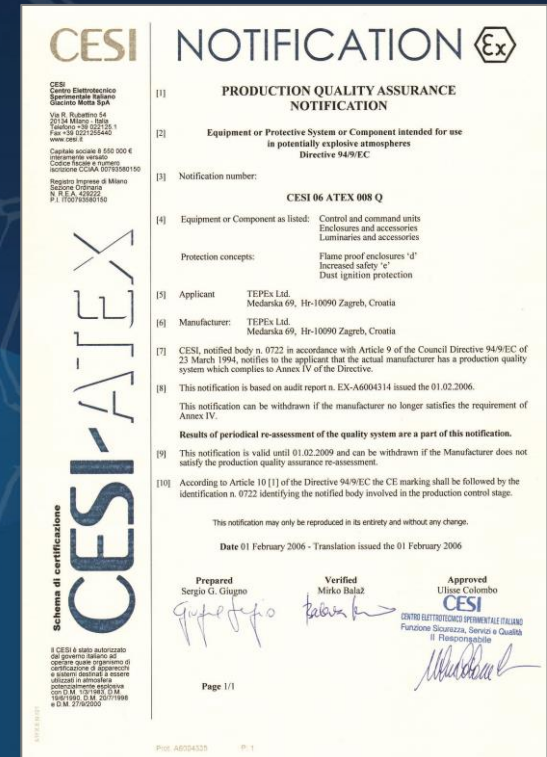


LASER MACHINES

3500 M²



TEP Ex



Ex LED linear light fitting PSF LED

TEP Ex



*Ex emergency version
PSF LED-E*

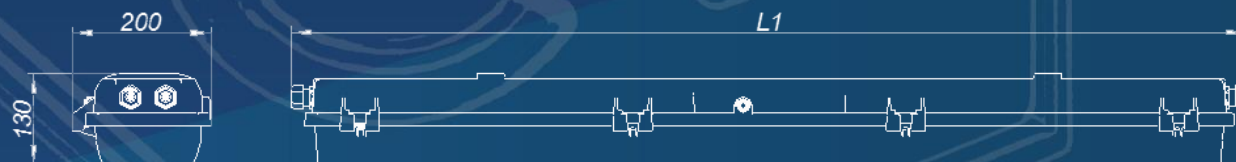
Estimated service life L70B10C10

$T_a \leq 20^{\circ}\text{C} > 130\,000\text{h}$

$T_a \leq 30^{\circ}\text{C} > 100\,000\text{h}$

$T_a \leq 40^{\circ}\text{C} > 50\,000\text{h}$

Apparatus category:	II 2GD
Explosion protection:	Ex db eb mb op is IIC T4 Gb Ex tb op is IIIC T80°C Db
Environment temperature:	$-30^{\circ}\text{C} \div +55^{\circ}\text{C} (+40^{\circ}\text{C})$
Degree of protection:	IP66
Rated voltage:	230 VAC



TYPE	LED power	Luminous flux [lm] of LED source	Amb. Temp.
PSF 28 LED-2	37 W	5580 lm	$-30^{\circ}\text{C} \leq T_a \leq +40^{\circ}\text{C}$
PSF 52 LED-2	70 W	11100 lm	
PSF 28 LED-1	28 W	4600 lm	$-30^{\circ}\text{C} \leq T_a \leq +55^{\circ}\text{C}$
PSF 52 LED-1	52 W	9100 lm	

TYPE	L1 [mm]	L2 [mm]
PSF 28 LED	750	400
PSF 52 LED	1370	800

Ex LED linear light fitting PSF LED

TEPEX



Standard version with wall/ceiling mounting set PSF 30-110



Central locking with internal switch

Ex LED linear light fitting **PSF LED**

TEP Ex



Housing: SMC polyester plastic reinforced with glass fiber, color RAL 7038

Diffuser: PC polycarbonate plastic

Gasket: silicone



LED modules with innovative encapsulation

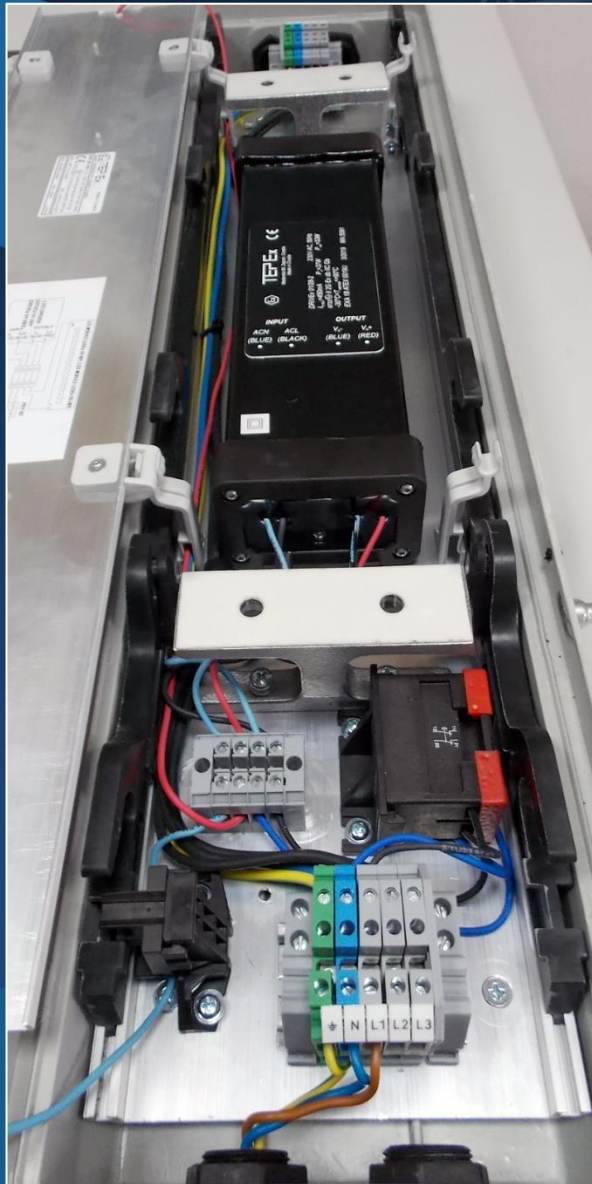
Reflector with linear LED (with or without diffuser)

LED type LLE G4 4000lm 840 2T ADV, Tridonic GmbH



Ex LED linear light fitting PSF LED

TEPEX



Heavy-duty construction with aluminium base plate
Internal components:

- Switch
- Through wiring (standard version)
- **Overcurrent protection:**
PSF 28 LED / 1 – $I_n = 500\text{mA}$, IEC 60127
PSF 28 LED / 2 – $I_n = 630\text{mA}$, IEC 60127
- **Overtemperature protection:**
Thermal self-return fuse, IEC 60730-1
- **Autonomous reactivation after recovery**

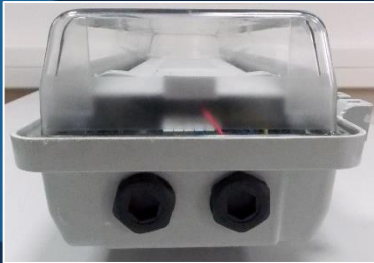
Ex LED driver

(with electronic type ELG-75-C700A, MeanWell)



Ex LED linear light fitting **PSF LED**

TEP Ex



Entries – four holes for M25 cable gland/plug
Standard delivery

- 3x M25 Exe plastic plug
- 2x M25 Exe plastic cable glands (7-15mm)



Mounting accessories:

- Ceiling mounting set
- Pipe mounting set
- Angular wall mounting set
- Ring bolt



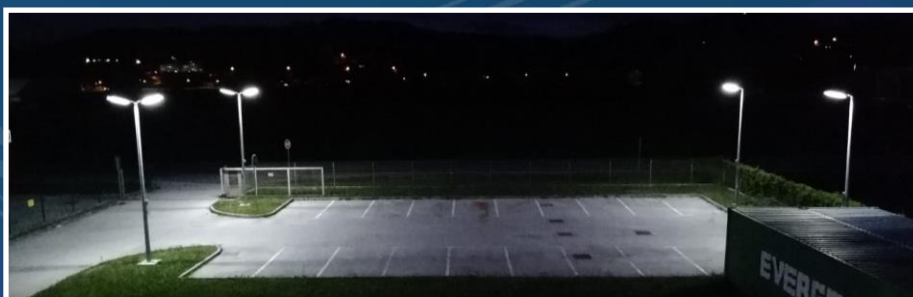
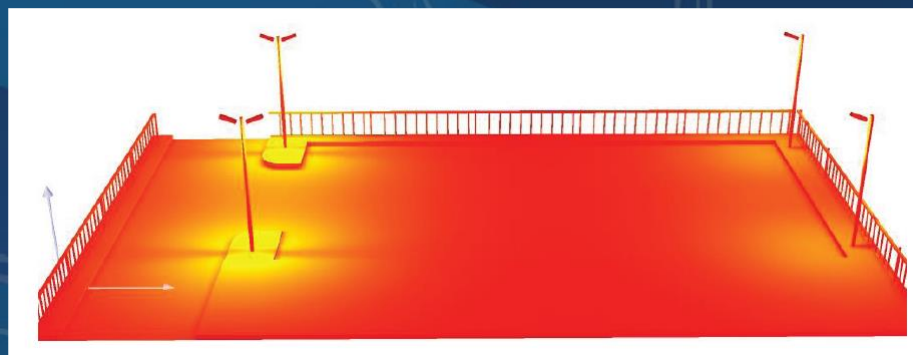
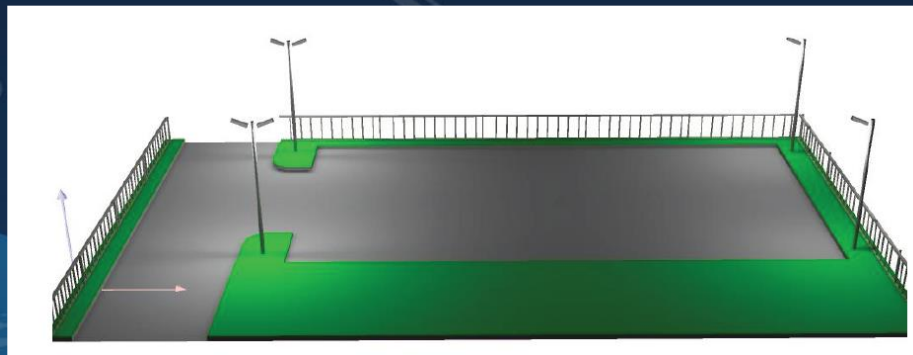
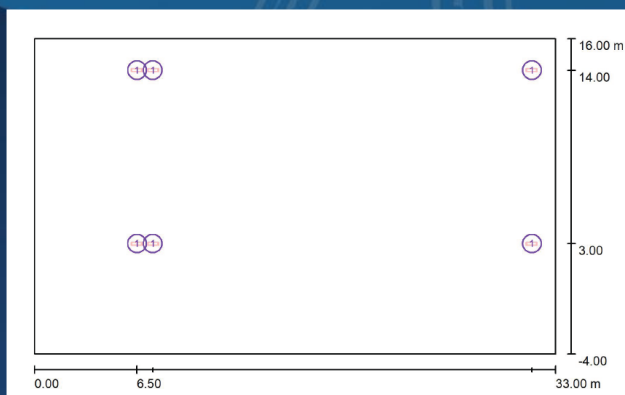
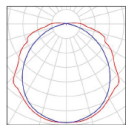
Ex LED linear light fitting **PSF LED-E** (emergency with battery module)

- **LED strip:** LLE G4 24x560mm 4000lm 840 2T ADV, Tridonic GmbH
- **LED driver:** Luxtronic Emergency lighting unit Linear V LED, Hadler GmbH with protection from first faults
- **Battery security module BSM 01**
 - Protection from second faults
 - charge mode:
 - max. voltage 8,2V (reset automatically)
 - max. current 450mA (reset automatically)
 - discharge mode:
 - max. current 4A (doesn't reset automatically)
 - min. voltage 4,7V (reset automatically)
 - To restore reset automatically it is necessary reset voltage od min. 10s
- **Battery:**
 - Ni-Mh Saft VHT D, 6V 6Ah
 - built-in lighting, microprocessor controlled charging, discharging and battery monitoring
- **Rated autonomy:** 3 hours
- **Luminous flux in emergency mode:**
 - PSF 28 LED - E – 1400lm (30% rated luminous flux)
 - PSF 52 LED - E – 1400lm (15% rated luminous flux)

An example with our Ex LED Light fitting type PSF 28 LED-2

6 Pieces TEPEX d.o.o. PSF 28 LED / 2
Article No.:
Luminous flux (Luminaire): 4740 lm
Luminous flux (Lamps): 5576 lm
Luminaire Wattage: 37.0 W
Luminaire classification according to CIE: 97
CIE flux code: 44 74 92 97 85
Fitting: 1 x PSF 28 LED / 2 (Correction Factor 1.000).

See our luminaire catalog for an image of the luminaire.



Fuel Farm @ Dubrovnik Airport



Ex emergency light fitting type
FLXE 118 LED



Ex LED linear light fitting
type PSF LED



Ex control units type SKX 12....SKX 20



Ex LED linear light fitting
type PSF LED



Ex floodlight type RLF 400 HIT



Ex traffic light RED/GREEN
(2x LED light type 0403.24 LED 20)

TEP Ex